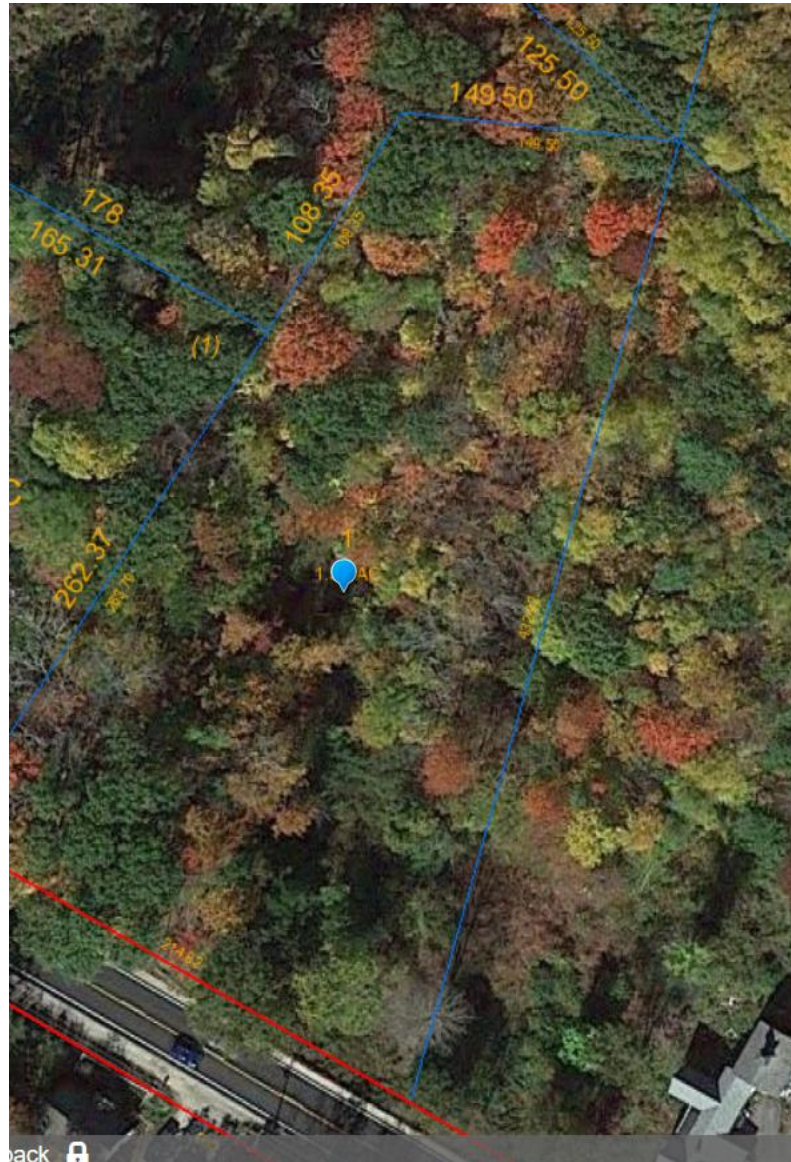
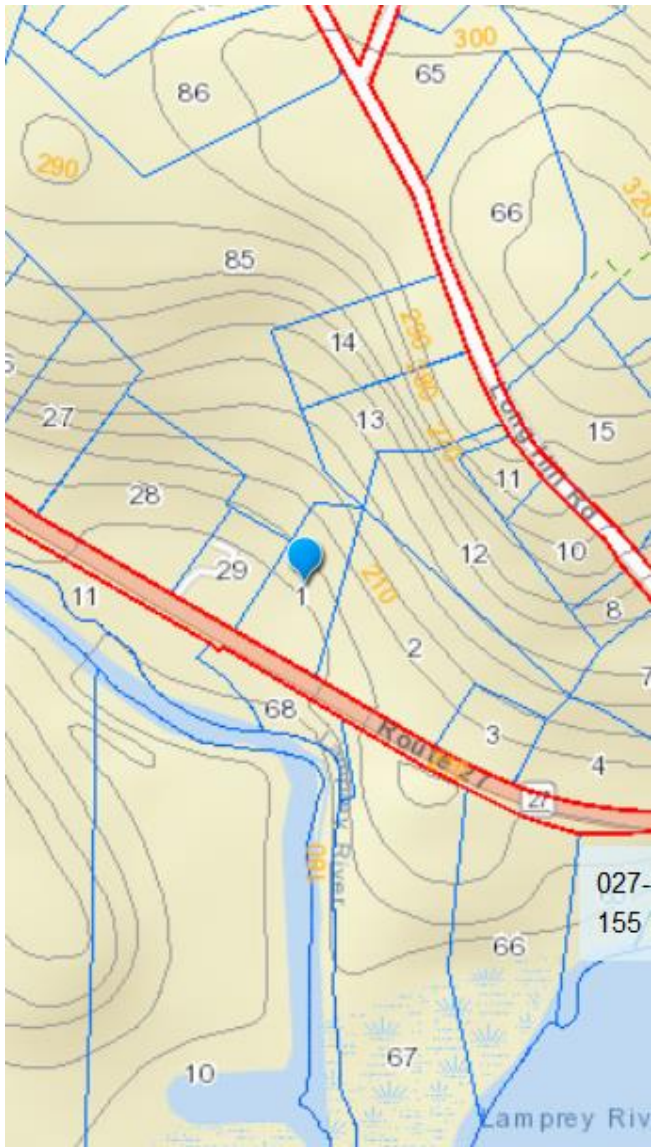


Map/Lot – 027-002-001 – Route 27 - 1.73 acres – between 165 & 169 Route 27 – to the right of Raymond Animal Hospital – Natural Resource Assessment available.

Comments from 2019 review: Surrounded by private property, more than 1/2 is in the floodplain and is a wetland. Zoned commercial, ⅓ of the lot in the groundwater protection zone. This property is across from the Lamprey River.





Site Walk Date:

Recommendations: